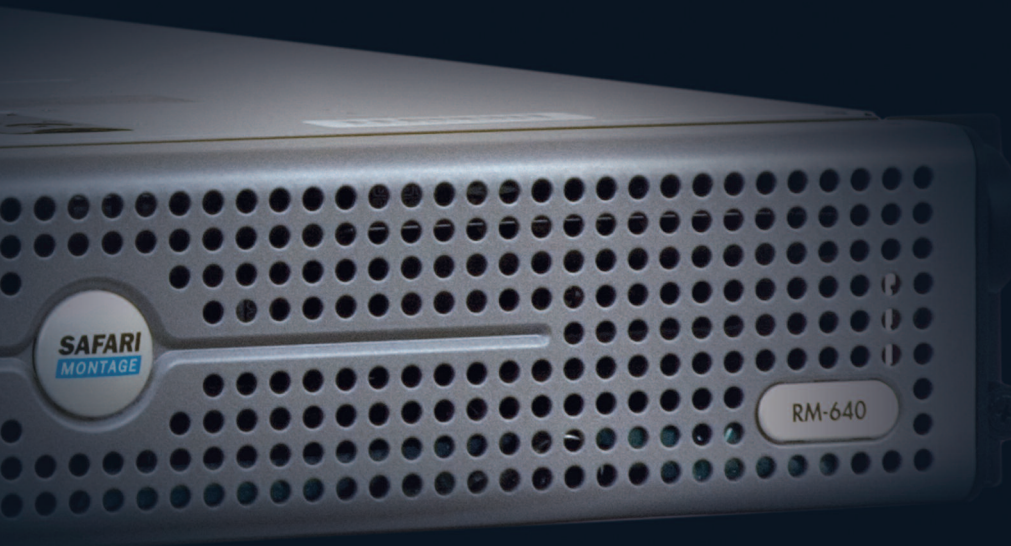


# **SAFARI** **MONTAGE**

by LIBRARY VIDEO COMPANY.



## Installation Guide

RM-640 Rack-Mount Server

# Welcome to SAFARI Montage!

Thank you for choosing SAFARI Montage. We are confident that you will be delighted with our broadcast-quality, video-on-demand solution. In just a few steps, you'll have access to fully segmented programs from the finest educational publishers – from anywhere on your network.



## Step 1 Unpacking Your Server

Carefully remove the SAFARI Montage server and the following items from the box, and place them on a flat surface. If you are missing any of the items below, please call 1.800.843.4549.



Front Bezel Faceplate



Power Cord



Ethernet Cable



Keys (2)  
Taped to Bezel



Diagnostics Disc



Rack-Mount Kit



## Rack Mounting Your Server

Install the server into your rack, using the supplied mounting rack kit and instructions. There should be adequate airflow around the server, with temperatures not exceeding 95° F.



## Connecting Your Server

Using the images on the next page as a guide, first connect the power cords from the back of the server into a grounded outlet. We highly recommend connecting it to an uninterruptable power supply (UPS).

Next, connect the server to the network by plugging an Ethernet cable into an active Ethernet port on your network.

Last, connect an optional monitor and keyboard to the server.

Monitor



Monitor Not Included

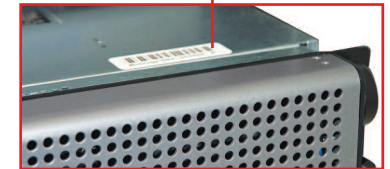
Ethernet Port

Keyboard



Keyboard Not Included

Serial Number



Note: It may be helpful for you to record both your service tag number and serial number located on your server for future support.



## Powering Up Your Server

Press the power button located on the front of the rack mount server prior to attaching the front bezel faceplate.

Power Button



## Congratulations!

You have completed the basic installation. Your digital content has been pre-activated and is ready to access.

A great place to get started is with the Interactive Video Tutorial. The User's Guide and the Administrator's Guide are accessible through the SAFARI Montage "Help." It is also available in the Support section at [www.SAFARIMontage.com](http://www.SAFARIMontage.com).

## Troubleshooting

If you have any difficulties with the installation or need further information, please visit [www.SAFARIMontage.com](http://www.SAFARIMontage.com) or call a support representative at 800.782.7230. When calling, please have both your server's serial number and service tag number available. Your serial number can be found in the **Help > About** section of the SAFARI Montage application and on the top right front of your server, and your service tag number can be found on the back of the server.

## Additional Digital Content

If you are interested in purchasing additional digital content packages, please visit [www.SAFARIMontage.com](http://www.SAFARIMontage.com) or contact your sales representative.

### NOTICE:

The information in this installation guide is subject to change without notice. Library Video Company reserves the right to modify the design of its products and change the information in this installation guide.

© 2007 Library Video Company. All Rights Reserved.

