

# Instructions for Installing the SAFARI Montage® SuperSet XXXIII Supplemental Drive

## OVERVIEW

The SAFARI Montage SuperSet XXXIII Supplemental drive you have just received works in conjunction with earlier release SuperSet content drive(s) to provide new content to your SAFARI Montage server.

## CONTENTS

- SAFARI Montage SuperSet XXXIII Supplemental Content Drive

## PREREQUISITES:

- SAFARI Montage 6.2.20
- Any combination, high or low resolution, of the following previously released SuperSets:
  - SuperSet XX
  - SuperSet XXI
  - SuperSet XXII
  - SuperSet XXIII
  - SuperSet XXIV
  - SuperSet XXV
  - SuperSet XXVI
  - SuperSet XXVII
  - SuperSet XXX
  - SuperSet XXXI
  - SuperSet XXXII
- Available drive bay

## PLEASE READ THESE INSTRUCTIONS IN THEIR ENTIRETY BEFORE YOU BEGIN:

- Review any questions with Technical Support in advance. Please note that SAFARI Montage Technical Support is available Monday – Friday from 8 a.m. to 6 p.m. Eastern Time and they may be contacted by telephone at 800-782-7230 or online via <http://www.safarimontage.com/support>.
- The SAFARI Montage SuperSet XXVIII Supplemental drive is to be permanently installed in tandem with currently installed SuperSet content drives. Currently installed drives must remain in the server for the supplemental drive to function properly.
- Removal of the supplemental drive is required when replacing the primary content drive(s).

## UPGRADE INSTRUCTIONS:

1. Shut down the SAFARI Montage server:
  - a. If performing the server shut down from the **web interface**:
    - i. Navigate to **ADMIN > Tools > Reboot and Shut Down**.
    - ii. Click on the **Shut Down** button
    - iii. Click **Shut Down** again to verify that you wish to shut down the server.
  - b. If performing the server shut down from the **console**:
    - i. Select option **#3 Advanced**, followed by option **#7 Shut Down**.
2. Drive configuration requirements vary depending on your server model. Identify your server model and follow the appropriate instructions below.

a. **Dell-manufactured servers:** If installing content drive(s) in one of the following models, please proceed to **page 5** to complete additional drive configuration steps, before returning here to continue at step 4.

- T-420
- T-440X
- T-86X
- RM-440X
- RM-640
- RM-640X
- RM-126X
- RM-128X
- WAN-880X
- WAN-1240
- WAN-1212X
- WAN-1216X

b. **WAN-1212:** If installing content drive(s) in a WAN-1212, please proceed to **page 5** to complete additional drive configuration steps, before returning here to continue at step 4.

c. If installing in any other model server:

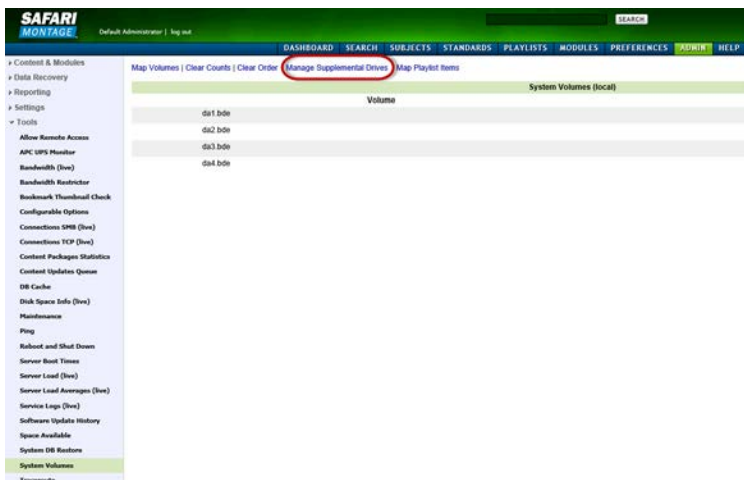
i. Insert the received SuperSet XXXIII Supplemental Content Drive(s) into the next available open bay(s) of the server. Make certain that each drive sled latch clicks into place, ensuring proper drive seating.

**Note:** If installing this drive into a **RM-820** or **WAN-840**, the drive must be installed in bay 1, 2, 3 or 4 as shown below:

Bay 4	<del>Bay 5</del>	<del>Bay 6</del>	<del>Bay 7</del>
<del>Bay 0 / OS-Drive</del>	Bay 1	Bay 2	Bay 3

ii. Power on the server.

4. Log in to the SAFARI Montage web interface with Administrator privileges.
5. Navigate to **ADMIN -> Tools -> System Volumes**.
6. Click on the **Manage Supplemental Drives** link at the top of the page.



7. Link the supplemental drive to the installed content drive(s) by clicking on the **Link** action. When linking is complete, click **Return to Supplemental Drive Management** to verify the link status and link an additional drive.

**Note:** One supplemental drive can be linked to only one high resolution content drive and one low resolution content drive. If multiple content drives exist, multiple supplemental drives can be installed and linked.

Manage Supplemental Content Drives			
One Supplemental Drive can be linked to a maximum of one High Resolution content drive and one Low/Medium Resolution content drive.			
Supplemental Drive	Volume	Status	Actions
5525 1TB Supplemental Content Drive (mre1da2.bde)	MontageSuperSH00V_2TB (mre1da2.bde)	Not Linked	Link
	MontageSuperSH00V_2TB_HRES (mre1da2.bde)	Not Linked	Link

*Unlinked Supplemental Drives*

Manage Supplemental Content Drives			
Complete			
<a href="#">Return to Supplemental Drive Management</a>			

*Supplemental Drive Link Complete*

Manage Supplemental Content Drives			
Linking drives mre1da2.bde to mre1da4.bde ...			
<a href="#">Return to Supplemental Drive Management</a>			

*Supplemental Drive Linking*

Manage Supplemental Content Drives			
One Supplemental Drive can be linked to a maximum of one High Resolution content drive and one Low/Medium Resolution content drive.			
Supplemental Drive	Volume	Status	Actions
5525 1TB Supplemental Content Drive (mre1da2.bde)	MontageSuperSH00V_2TB (mre1da2.bde)	Linked	Unlink
	MontageSuperSH00V_2TB_HRES (mre1da2.bde)	Linked	Unlink

*Supplemental Drives Linked*

- After supplemental drive linking is complete, activate all new packages – **ADMIN > Content & Modules > Activate ALL.**

**Note:** New package licensing has been pre-entered and is ready to activate.

For customers using the **SAFARI Montage WAN Manager** module, continue with **Steps 9 and 10**; else skip to **Step 11.**

- Assign new packages, mirroring assignments for retiring packages – **ADMIN > WAN Manager > Schools.** A Package map of new and retiring packages is on page 3.
- Un-assign retiring packages from all schools – **ADMIN > WAN Manager > Schools.**
- Deactivate retiring packages – **ADMIN > Content & Modules > Content Packages.**
- Remap Playlists and Lessons by navigating to **ADMIN > Tools > System Volumes** and clicking on the **Map Playlist and Lesson Items** link.

**~ THIS COMPLETES THE DRIVE INSTALLATION ~**

## PACKAGE MAP

### Notes:

- 300K **Spanish** packages may be deactivated for all packages below as Spanish titles are included in new packages.
- Each package listed below refers to all formats and bitrates for the noted package.

New Packages, Which Will Activate Upon "Activate All"		Replaces These Package(s), Which Are to Be Unassigned & Deactivated
G112907xx – Core K-8 Content Package (2015)	>	All prior versions of <b>Core K-8 Content Packages, Reading Rainbow Content Packages, Eyes on the Prize Content Packages</b>
G198005xx – K-8 Super Core (2015)	>	All prior versions of <b>Core K-8, K-8 Super Core, Reading Rainbow, Eyes on the Prize</b> and <b>K-6 Supplemental</b> , whose new name is <b>K-8 Expansion</b> .
G198104xx – K-8 Expansion (2015)	>	All prior versions of <b>K-6 Supplemental</b> All prior versions of <b>K-8 Expansion</b>
G113306xx - Core 9-12 Content Package (2015)	>	All prior versions of <b>9-12 Core Content Packages</b> and <b>Eyes on the Prize Content Packages</b>
G129807xx - 9-12 Super Core Content Package (2015)	>	All prior versions of <b>9-12 Super Core Content Packages, Eyes on the Prize Content Packages</b> All versions of G1121 - <b>Additional SM 9-12</b> G1298S02MN - <b>9-12 Super Core Content Package (Spanish)</b>
G129407xx – 9-12 Expansion (2015)	>	All prior versions of <b>9-12 Expansion</b> All versions of G1121 - <b>Additional SM 9-12</b>
G112507xx - Core K-12 Content Package (2015)	>	All prior versions of <b>Core K-12 Content Packages, Rainbow Content Packages</b> and <b>Eyes on the Prize Content Packages</b>
G131807xx - K-12 Super Core Content Package (2015)	>	All prior versions of <b>Core K-12 Content Packages, K-12 Super Core Content, Reading Rainbow Content Packages</b> and <b>Eyes on the Prize Content Packages</b> All versions of G1121 - <b>Additional SM 9-12</b> G1311S02MN <b>K-12 Super Core Content Package (Spanish)</b>
G126405xx - Cyber-Science Interactive 3D Model Package (2014)	>	All prior versions of <b>Cyber-Science Interactive 3D Model Package</b> <b>Note:</b> Remap prior package titles using Admin > Tools > System Volumes > Map Playlist and Lesson Items to Cyber-Science 2014 Package
G974309xx - American Schools Overseas K-8 (2015)	>	All prior versions of <b>American Schools Overseas K-8</b>
G974709xx - American Schools Overseas 9-12 (2015)	>	All prior versions of <b>American Schools Overseas 9-12</b>
G975609xx - American Schools Overseas K-12 (2015)	>	All prior versions of <b>American Schools Overseas K-12</b>
G980409xx - Canadian K-9 Content Package (2015)	>	All prior versions of <b>Canadian K-9 Content Package</b>
G981209xx - Canadian 9-12 Content Package (2015)	>	All prior versions of <b>Canadian 9-12 Content Package</b>
G980809xx - Canadian K-12 Content Package (2015)	>	All prior versions of <b>Canadian K-12 Content Package</b>
G122502 – Visual Dictionary Interactive Image Package (2014)	>	Prior version of <b>Visual Dictionary Interactive</b> <b>Note:</b> All prior version references will be mapped to Visual Dictionary 2014 references

Package Map Continued:

<b>G1302MN – Career Clips Content Package (300k)</b>	>	All prior versions <b>Career Clips Content Packages</b>
<b>G999202N – National Archives Digital Resources (2015)</b>	>	All prior versions of <b>Digital Resources from the National Archives</b>
<b>G200903N – TED-Ed Web Links Content Package (2016)</b>	>	All prior versions of <b>TED-Ed Web Links</b>
<b>G198702N – Teaching Channel Web Links Content Package (2016)</b>	>	All prior versions of <b>Teaching Channel Web Links</b>
<b>G999402N – Khan Academy Web Links Content Package (2016)</b>	>	All prior versions of <b>Khan Academy Web Links</b>
<b>G200602N – Scholastic Channel Web Links Content Package (2016)</b>	>	All prior versions of <b>Scholastic Channel Web Links</b>
<b>G999502N – FEMA Digital Resources Content Package (2016)</b>	>	All prior versions of <b>FEMA Digital Resources</b>
<b>G118303N – The World Factbook Content Package (2016)</b>	>	All prior versions of <b>The World Factbook</b>

## Dell Manufactured Servers

---

For the following Dell-manufactured servers, Virtual Disk Management will need to be configured:

- T-420
- T-440X
- T-86X
- RM-440X
- RM-640
- RM-640X
- RM-126X
- RM-128X
- WAN-880X
- WAN-1240
- WAN-1212X
- WAN-1216X

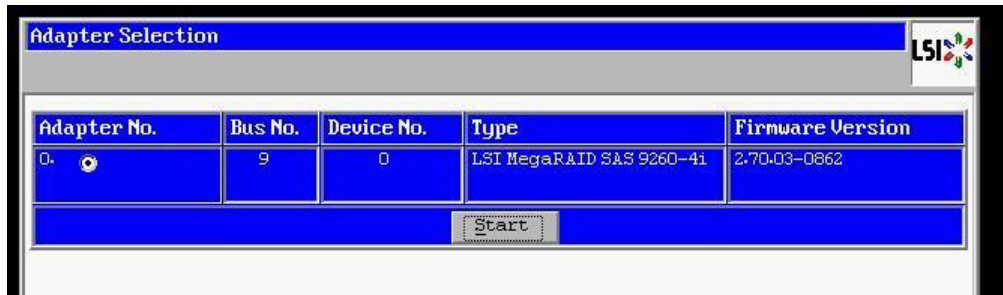
To do so, perform the following on system boot:

1. Insert all new content drive(s) into the next available open bay(s) of the server. Make certain that each drive sled latch clicks into place, ensuring proper drive seating.
2. Power on the server.
3. When prompted, press **<CTRL>+<R>** to access Virtual Disk Management. If prompted, press **<C>** and/or **<Y>** when accessing Virtual Disk Management.
4. Use the arrow keys and navigate the Virtual Disk Management screen and select the **PERC controller** (top node).
5. Press **<F2>** to open the properties sub-menu and choose **“Foreign Config”**.
  - a. If **“Foreign Config”** is un-selectable and **“Unconfigured Physical Disks”** appear in Virtual Disk Management, continue to step 8
6. Select **Clear** from the Foreign Config sub-menu.
7. Use the arrow keys to select **“Yes”** and press **<Enter>**.
  - a. **“Unconfigured Physical Disks”** will appear in Virtual Disk Management
8. Use the arrow keys and navigate the Virtual Disk Management screen and select the **PERC controller** (top node).
9. Press the **<F2>** to open the properties sub-menu and choose **“Create New VD”**.
10. Using the **<Tab>** key, navigate to the **“Physical Disk”** list and select the first disk in the list (use the spacebar to select).
11. Using the **<Tab>** key, navigate to **“OK”** and press **<Enter>**.
12. Use the arrow keys to select **“Yes”** and press **<Enter>** when prompted about skipping initialization.
  - a. New VD will appear in Virtual Disk Management.
13. Repeat steps 6 through 10 for all remaining **“Unconfigured Physical Disks”**. When all unconfigured disks have been added as Virtual Disks, continue to step 12.
14. Press **<ESC>** key and select **“OK”** to exit Virtual Disk Management.
15. Press **<CTRL +ALT+DEL>** to reboot the server.
16. Return to step 4 on **page 2**.

## WAN-1212 Server

For the WAN-1212 server, the MegaRAID BIOS will need to be configured. To do so, perform the following on system boot prior to installing any new drives:

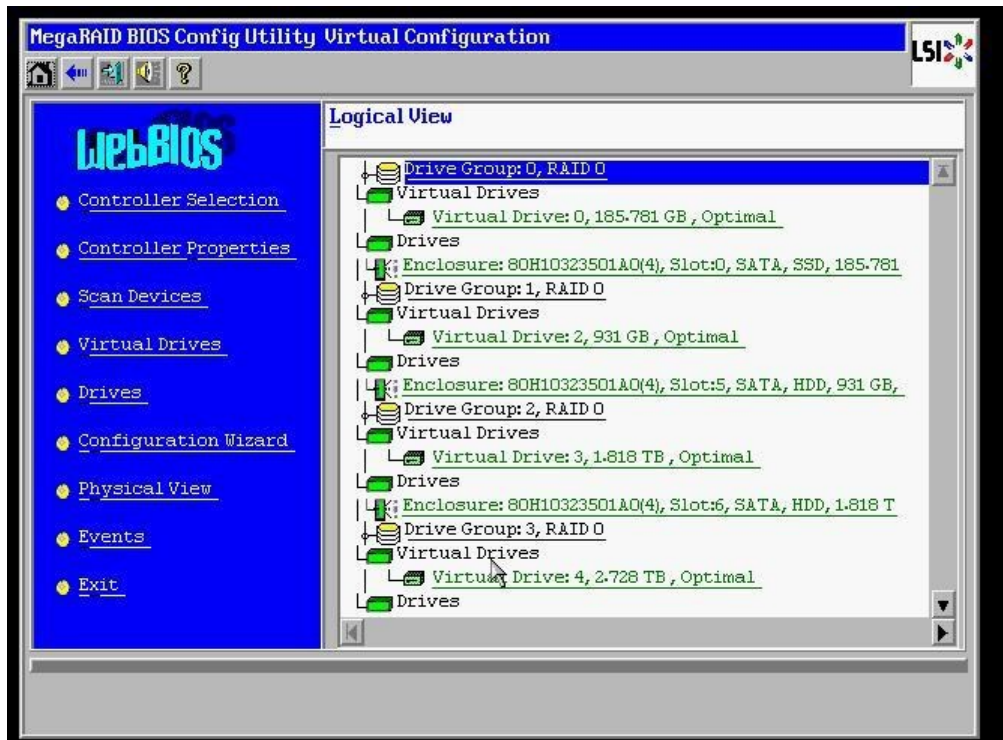
1. Access the LSI MegaRAID SAS controller BIOS by pressing **<Ctrl>+<H>** when prompted during boot up.
2. Click the **Start** button to access MegaRAID BIOS Config Utility.



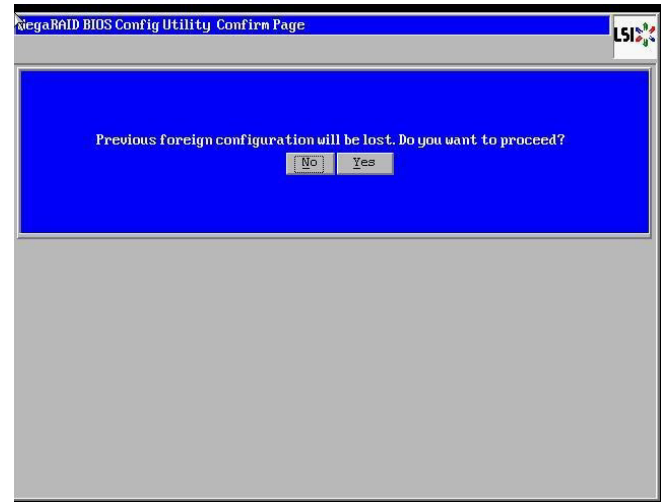
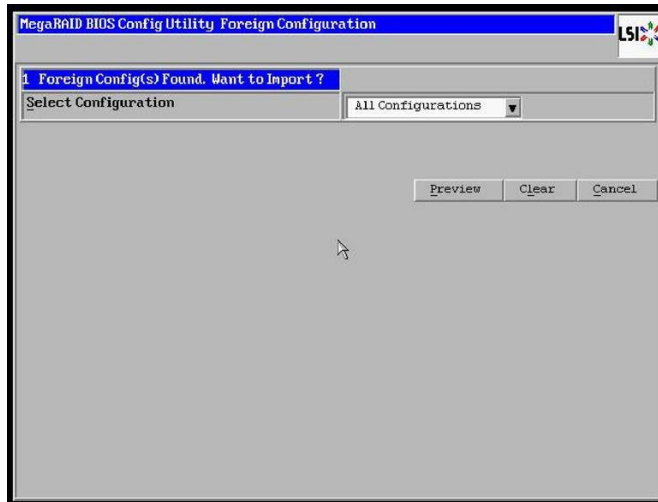
3. Insert a single new content drive into the next available open bay of the server. Make certain that each drive sled latch clicks into place, ensuring proper drive seating.

Wait approximately 30 seconds and then click the **Scan Devices** link from Navigation to access to the Foreign Configuration page.

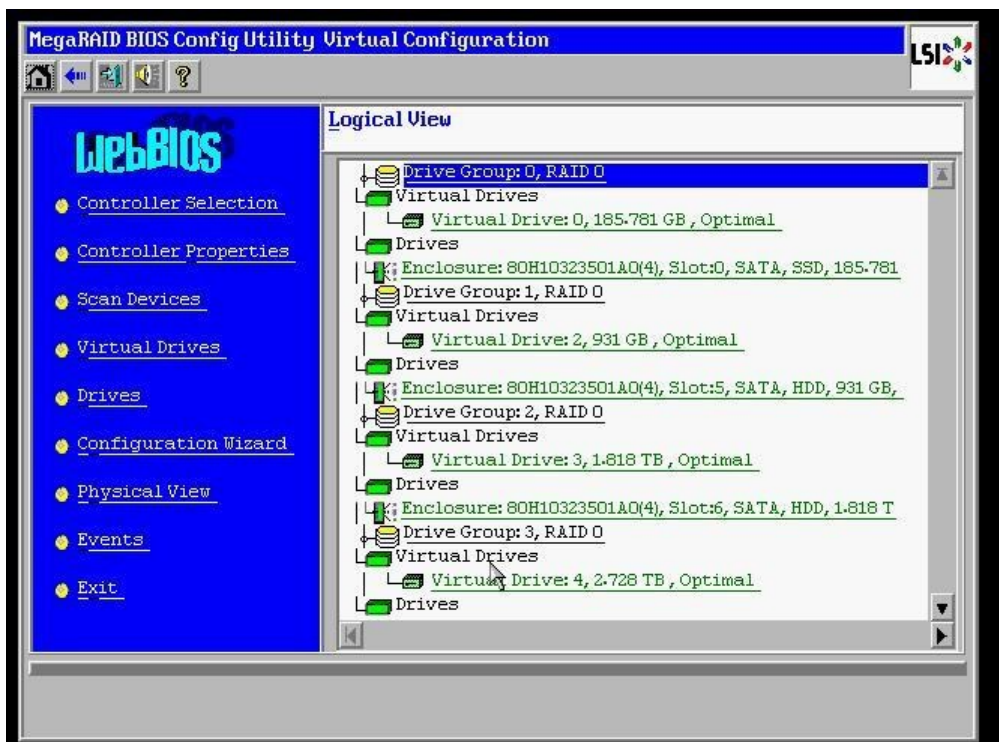
**Note:** If you have more than one new drive you will repeat steps 3 through 15 for each drive.



- When prompted, click on the **Clear** button to clear the foreign configuration of the drive. Then click **Yes** to confirm and return to the Logical View.

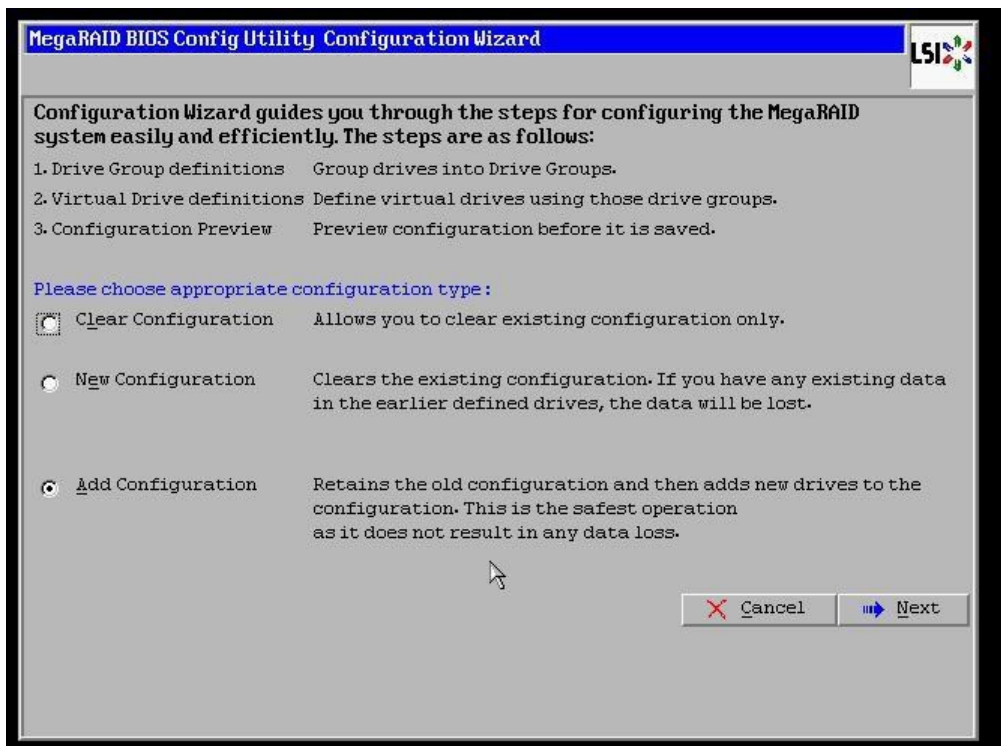


- Click **Configuration Wizard** link from Navigation to access the Configuration Wizard.





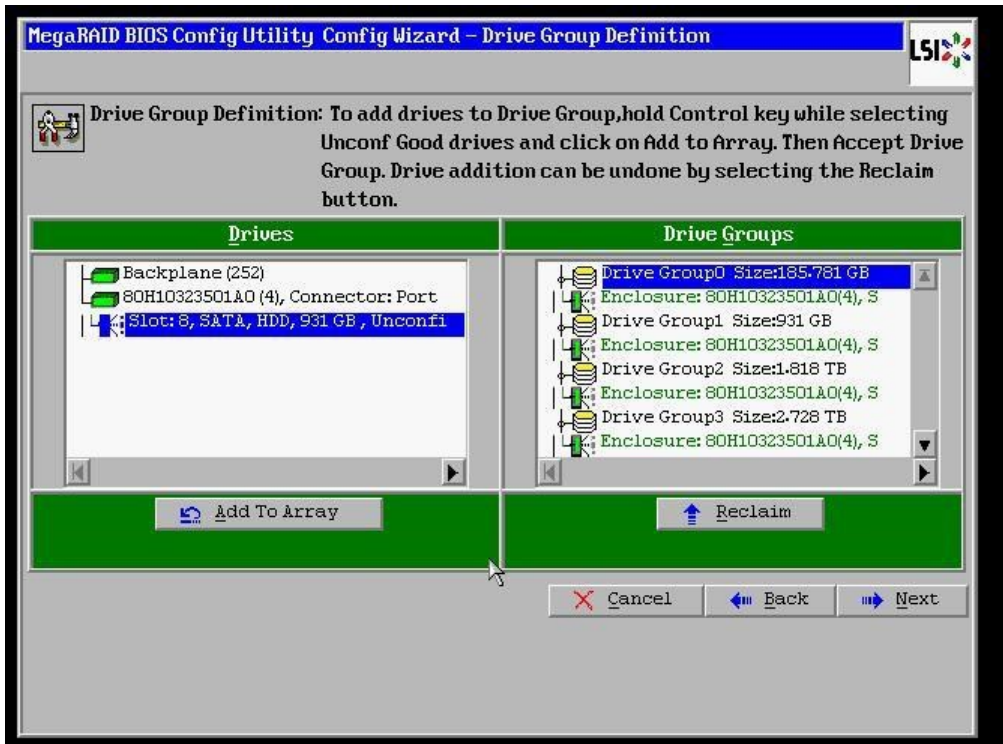
6. Select **Add Configuration** and click **Next** to continue.



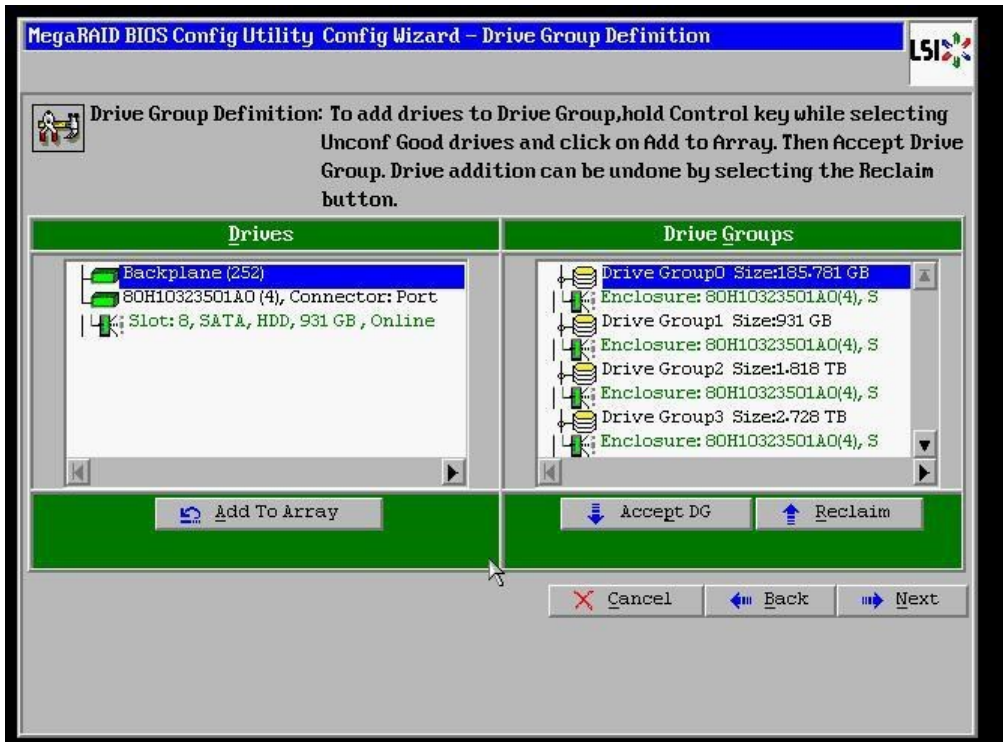
7. Select **Manual Configuration** under the Configuration Method and click **Next** to continue.



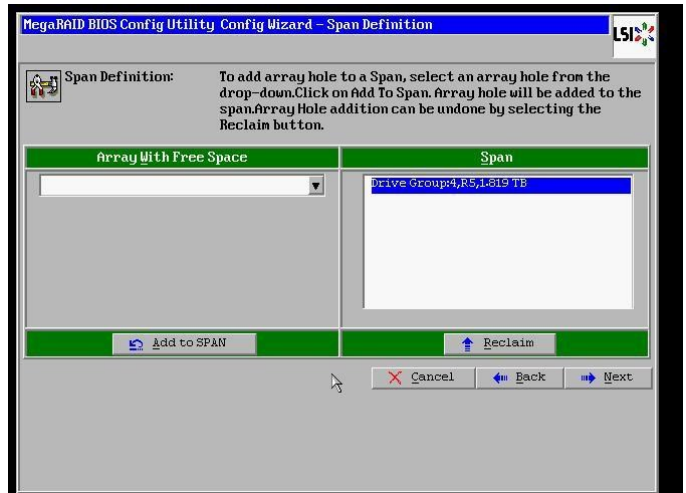
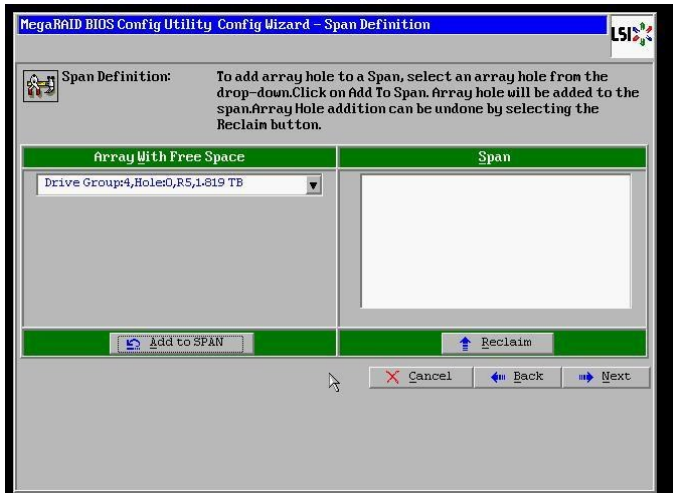
8. Select the newly installed hard drive from the **Drives** list and click the **Add To Array** button.



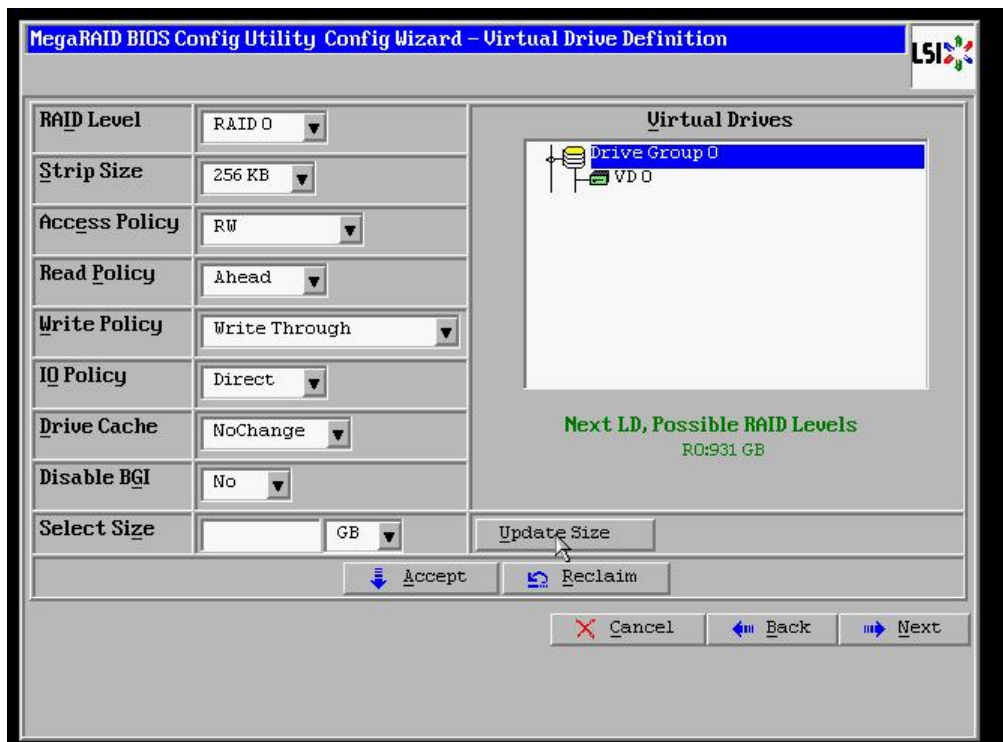
9. Click on the **Accept DG** button, to accept the Drive Group from under the **Drive Groups** and click **Next** to continue.



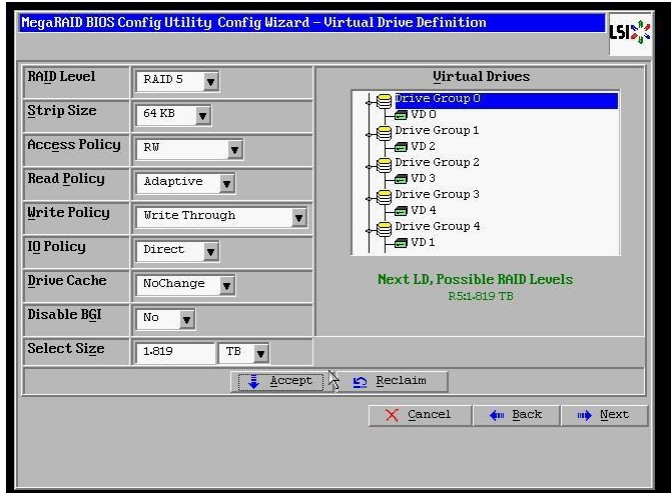
10. Select the hard drive from the **Array With Free Space** drop down and click the **Add to SPAN** button. The hard drive should move to the **Span** window. Click **Next** to continue.



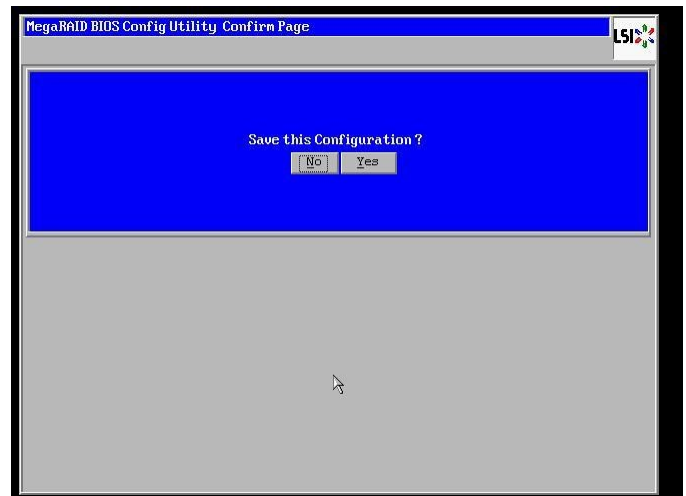
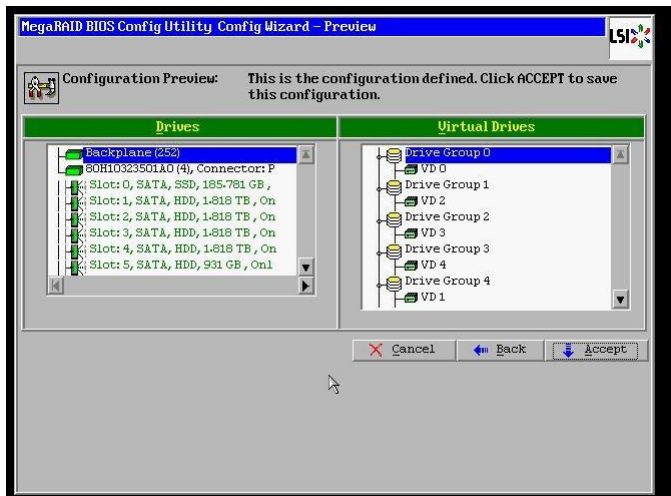
11. Click on the **Update Size** button.



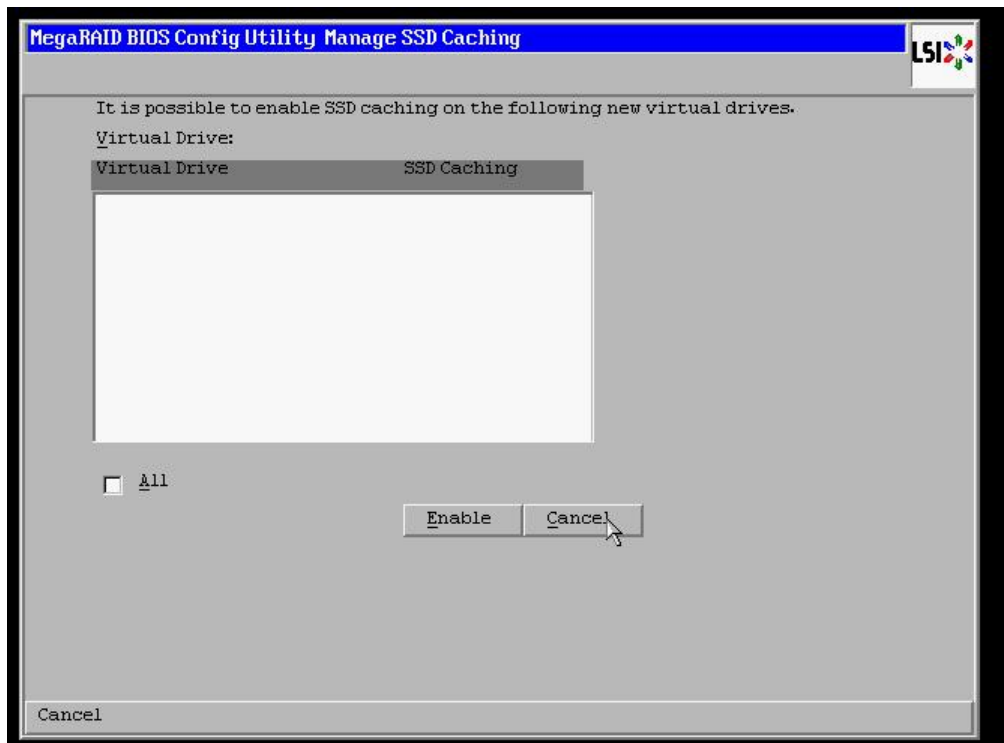
12. Click on the **Accept** button to save the drive configuration. Click on the **Yes** button when prompted regarding use of **Write Through mode**. Click on **Next** to continue.



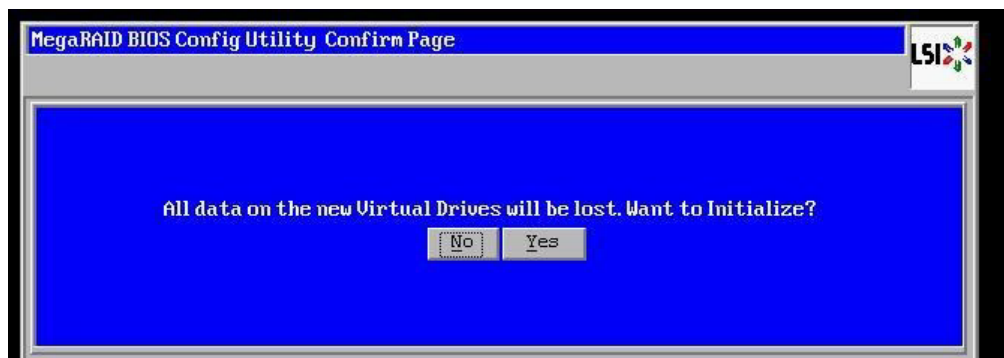
13. Click **Accept** to save the virtual drive configuration and then click **Yes** to confirm.



14. Click **Cancel** when asked to enable SSD caching.



15. Click **No** when asked to initialize the virtual drive.

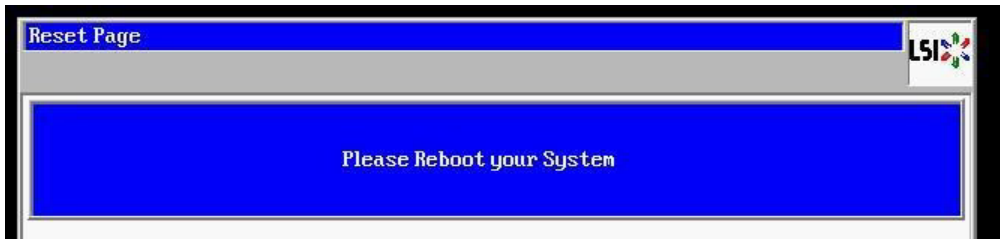


**Note:** If installing multiple drives return to step 3 now and repeat for each new drive.

16. When all new content drives have been configured, click the **Exit** link in the left-hand navigation and then **Yes** to confirm.



17. Press <CTRL>+<ALT>+<DELETE> to restart the server.



18. Return to step 4 on **page 2**.