

Instructions for Installing the SAFARI Montage® SuperSet XLII (42) Content Drive Set

CONTENTS:

SAFARI Montage SuperSet 42 Adaptive Bitrate (ABR) Content Two-Drive Set.

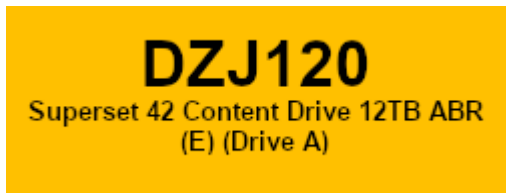
PLEASE READ THESE INSTRUCTIONS IN THEIR ENTIRETY BEFORE YOU BEGIN:

- SuperSet 42 requires SAFARI Montage v8.3.x or later and changes to system settings.
- Review the SAFARI Montage 8.3.x System Requirements available at: <http://safarimontage.com/support/releases/SM-8.3.x.aspx>
- Please contact Technical Support if you need any assistance regarding the status of your SAFARI Montage server, to schedule an upgrade, or to review any questions you may have before installing your new content drives
- SAFARI Montage Technical Support is available Monday-Friday from 8 a.m. to 6 p.m. Eastern Time and may be contacted by telephone at 800-782-7230 or online via <http://www.safarimontage.com/support/>

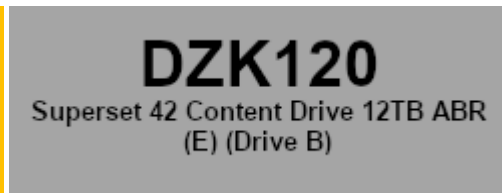
NOTES:

- Classroom Media Controllers/KIOSKs and SupeTube do not support playback of ABR video and are not compatible with SuperSet 42 content drives, and also require that the SAFARI Montage Auto-Converter be configured to enable “Convert to H.264 MP4s:” if the “Adaptive Bitrate Streaming (ABR)” auto-conversion option is enabled for playback of CreationStation content
- Drives are labeled in a set with “Drive A” and “Drive B” color coded to ensure they are installed together

Drive A



Drive B



- Install drives in adjacent drive bays (example: If Drive A is installed in bay 1 then install Drive B in bay 2)
- **Important: If installing more than one set of drives in a server, install one set at a time and reboot in between drive sets**
- In environments with multiple servers there will also be labels with the serial number of the server in which the drive sets are to be installed

UPGRADE INSTRUCTIONS:

1. Shut down the SAFARI Montage server:
 - a. If performing the server shut down from the **web interface**:
 - i. Navigate to **Admin > Tools > Reboot and Shut Down**.
 - ii. Click on the **Shut Down** button
 - iii. Click **Shut Down** again to verify that you wish to shut down the server
 - b. If performing the server shut down from the **console**:
 - i. Select option **#3 Advanced**, followed by option **#7 Shut Down**
2. Remove all prior SuperSet content drives from the server. **Do NOT remove CreationStation drives.**
Note: For environments utilizing CMCs, you may leave the last compatible SuperSet (SuperSet 37 or earlier) installed to maintain the ability to play packaged content on the CMC.
3. Drive configuration requirements vary depending on server model. Identify your server model and follow the appropriate instructions below.

a. **Dell-manufactured servers:** If installing content drive(s) in one of the following models, please proceed to **page 5** to complete additional drive configuration steps, before returning here to continue at step 4

- T-420
- T-440X
- T-86X
- RM-126X
- RM-128X
- WAN-1220 *
- RM-440X
- RM-640
- RM-640X
- WAN-1216X
- WAN-1220X
- WAN-880X
- WAN-1240
- WAN-1210X
- WAN-1212X
- WAN-1216 *

* While the WAN-1216 and WAN-1220 are not Dell-manufactured servers, drive configuration is similar to Dell’s Virtual Disk Management and the same instructions are used

b. **WAN-1212:** If installing content drive(s) in a WAN-1212, please proceed to **page 7** to complete additional drive configuration steps, before returning here to continue at step 4

c. If installing in any other model server:

- i. Insert the received SuperSet 42 Content Drive(s) into the next available open bay(s) of the server. Make certain that each drive sled latch clicks into place, ensuring proper drive seating.

Note: If installing this drive into a **RM-820** or **WAN-840**, the drive must be installed in bay 1, 2, 3 or 4 as shown below:

Bay 4	Bay 5	Bay 6	Bay 7
Bay 0 / OS Drive	Bay 1	Bay 2	Bay 3

- ii. Power on the server



4. Log in to SAFARI Montage and activate new packages by navigating to **Admin > Content & Modules > Activate All**

Note:

- Package licensing has been entered in advance and is ready to activate when new drive(s) are installed
- For customers upgrading from SuperSet 38 or later, proceed to step 7

5. For customers using the SAFARI Montage WAN Manager Module, proceed as follows; otherwise, skip to Step 6
 - a. Assign new packages, mirroring assignments for retiring packages by navigating to **Admin > WAN Manager > Schools**. A package map of new and retiring packages is included for reference on the following page.
 - b. Un-assign retiring packages from all schools by navigating to **Admin > WAN Manager > Schools** and adjusting assignments
Note: If CMC-compatible drives were left installed during step 2, skip this step
6. Deactivate retiring packages by navigating to **Admin > Content & Modules > Content Packages** and clicking Deactivate for each retired package
Note: If CMC-compatible drives were left installed during step 2, skip this step
7. Remap Playlists and Lessons to the new package content by navigating to **Admin > Tools > System Volumes** and clicking the **Map Playlist and Lesson Items** link
8. Enable **Default All Playback to HTML5 Media Player** by navigating to **Admin > Settings > System**. Click the check box for this feature and click the **Save** button at the bottom of the page.

~ THIS COMPLETES THE DRIVE INSTALLATION PROCESS~

PACKAGE MAP

Notes:

- Older 300k, 800k, 1600k, and **Spanish** packages may be deactivated for all new packages below as Spanish titles are included in new packages
- Each package listed below refers to all formats and bitrates for the noted package

New Packages, Which Will Activate Upon "Activate All"		Replaces These Package(s), Which Are to Be Unassigned & Deactivated
G112909 – Core K-8 Content Package (ABR)	>	All prior versions of Core K-8 Content Packages, Reading Rainbow Content Packages, Eyes on the Prize Content Packages
G198007 – K-8 Super Core (ABR)	>	All prior versions of Core K-8, K-8 Super Core, Reading Rainbow, Eyes on the Prize and K-6 Supplemental , whose new name is K-8 Expansion .
G198106 – K-8 Expansion (ABR)	>	All prior versions of K-6 Supplemental All prior versions of K-8 Expansion
G113308 - Core 9-12 Content Package (ABR)	>	All prior versions of 9-12 Core Content Packages and Eyes on the Prize Content Packages
G129809 - 9-12 Super Core Content Package (ABR)	>	All prior versions of 9-12 Super Core Content Packages, Eyes on the Prize Content Packages All versions of G1121 - Additional SM 9-12 G1298S02MN - 9-12 Super Core Content Package (Spanish)
G129409 – 9-12 Expansion Content Package (ABR)	>	All prior versions of 9-12 Expansion All versions of G1121 - Additional SM 9-12
G112509 - Core K-12 Content Package (ABR)	>	All prior versions of Core K-12 Content Packages, Rainbow Content Packages and Eyes on the Prize Content Packages
G131809 - K-12 Super Core Content Package (ABR)	>	All prior versions of Core K-12 Content Packages, K-12 Super Core Content, Reading Rainbow Content Packages and Eyes on the Prize Content Packages All versions of G1121 - Additional SM 9-12 G1311S02MN K-12 Super Core Content Package (Spanish)
G126405xx - Cyber-Science Interactive 3D Model Package (2014)	>	All prior versions of Cyber-Science Interactive 3D Model Package Note: Remap prior package titles using Admin > Tools > System Volumes > Map Playlist and Lesson Items to Cyber-Science 2014 Package
G974311 - American Schools Overseas K-8 (ABR)	>	All prior versions of American Schools Overseas K-8
G974711 - American Schools Overseas 9-12 (ABR)	>	All prior versions of American Schools Overseas 9-12
G975611 - American Schools Overseas K-12 (ABR)	>	All prior versions of American Schools Overseas K-12
G122502 – Visual Dictionary Interactive Image Package (2014)	>	Prior version of Visual Dictionary Interactive Note: All prior version references will be mapped to Visual Dictionary 2014 references

Package Map Continued:

New Packages, Which Will Activate Upon "Activate All"		Replaces These Package(s), Which Are to Be Unassigned & Deactivated
Career Clips Content Package (ABR)	>	All prior versions Career Clips Content Packages
G999202N – National Archives Digital Resources (2015)	>	All prior versions of Digital Resources from the National Archives
G200903N – TED-Ed Web Links Content Package (2016)	>	All prior versions of TED-Ed Web Links
G999402N – Khan Academy Web Links Content Package (2016)	>	All prior versions of Khan Academy Web Links
G200602N – Scholastic Channel Web Links Content Package (2016)	>	All prior versions of Scholastic Channel Web Links
G999502N – FEMA Digital Resources Content Package (2016)	>	All prior versions of FEMA Digital Resources
G118304N – The World Factbook Content Package (2017)	>	All prior versions of The World Factbook
G964002N – NOAA Digital Resources Content Package (2016) (ABR)	>	All prior versions of NOAA Digital Resources
G198802N – The Gilder Lehrman Institute of American History Web Links (2017)	>	All prior versions of The Gilder Lehrman Institute of American History Web Links

Dell Manufactured Servers – Additional Content Drive Configuration

For the following servers, Virtual Disk Management will need to be configured:

- T-420
- T-440X
- T-86X
- RM-126X
- RM-128X
- WAN-1220 *
- RM-440X
- RM-640
- RM-640X
- WAN-1216X
- WAN-1220X
- WAN-880X
- WAN-1240
- WAN-1210X
- WAN-1212X
- WAN-1216 *

To do so, perform the following on system boot:

1. Insert Drive A into the next available open bay of the server. Make certain that the drive sled latch clicks into place, ensuring proper drive seating.
2. Power on the server
3. When prompted, press **<CTRL>+<R>** to access Virtual Disk Management. If prompted, press **<C>** and/or **<Y>** when accessing Virtual Disk Management.
4. Use the arrow keys and navigate the Virtual Disk Management screen and select the **PERC controller** (top node)
5. Press **<F2>** to open the properties sub-menu and choose **“Foreign Config”** and press **<Enter>**
 - a. If **“Foreign Config”** is un-selectable and **“Unconfigured Physical Disks”** appear in Virtual Disk Management, continue to step 8
6. Select **Clear** from the Foreign Config sub-menu
7. Use the arrow keys to select **“Yes”** and press **<Enter>**
 - a. **“Unconfigured Physical Disks”** will appear in Virtual Disk Management
8. Use the arrow keys and navigate the Virtual Disk Management screen and select the **PERC controller** (top node)
9. Press the **<F2>** to open the properties sub-menu and choose **“Create New VD”**
10. Using the **<Tab>** key, navigate to the **“Physical Disk”** list and select the first disk in the list (use the spacebar to select)
11. Using the **<Tab>** key, navigate to **“OK”** and press **<Enter>**
12. Use the arrow keys to select **“Yes”** and press **<Enter>** when prompted about skipping initialization
 - a. New VD will appear in Virtual Disk Management
13. Insert Drive B into the next available open bay of the server. Make certain that the drive sled latch clicks into place, insuring proper drive seating.
14. Wait 30 seconds for the drive to spin up, and then press F5 to refresh the page
15. Repeat steps 4 through 12 for Drive B and then continue to step 16
16. Press **<ESC>** key and select **“OK”** to exit Virtual Disk Management
17. Press **<CTRL +ALT+DEL>** to reboot the server
18. Repeat all of the above steps for each drive set if more than one is to be installed in a single server
19. Return to step 4 on **page 3**

* While the WAN-1220 is not a Dell-manufactured server, drive configuration is similar to Dell’s Virtual Disk Management and the same instructions are used

For the WAN-1212 server, the MegaRAID BIOS will need to be configured. To do so, perform the following on system boot prior to installing any new drives:

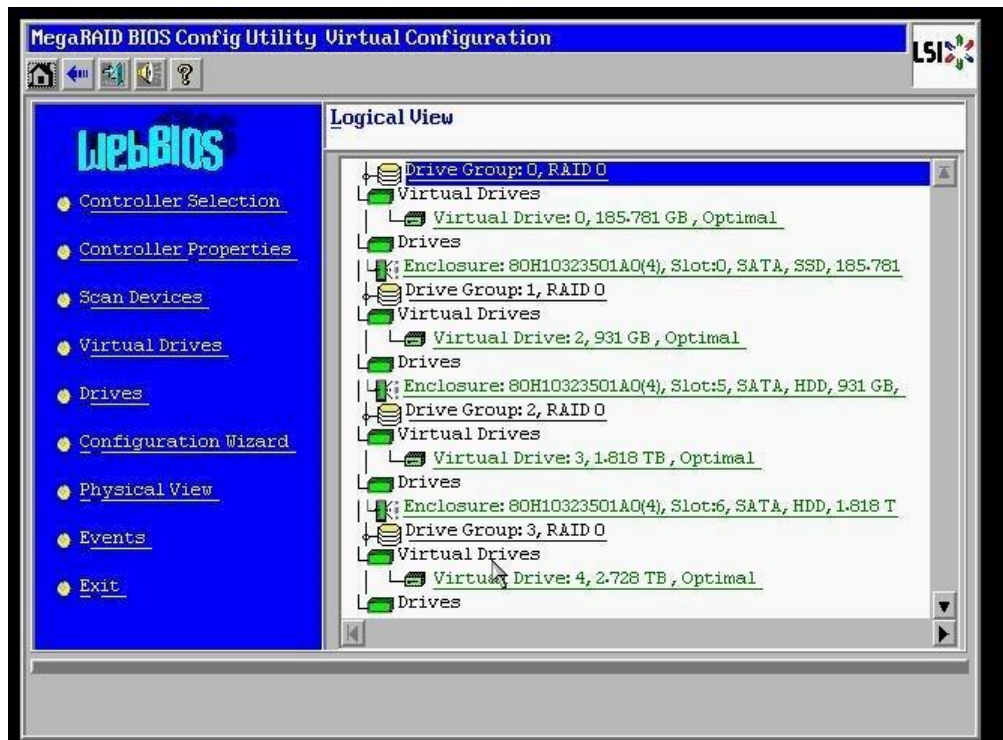
1. Access the LSI MegaRAID SAS controller BIOS by pressing **<Ctrl>+<H>** when prompted during boot up
2. Click the **Start** button to access MegaRAID BIOS Config Utility



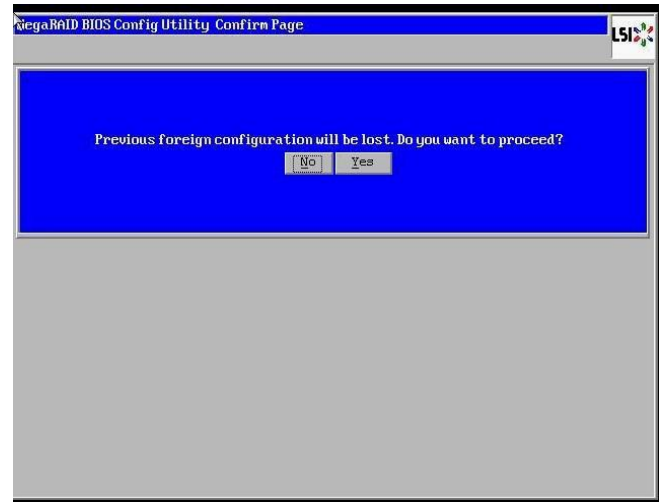
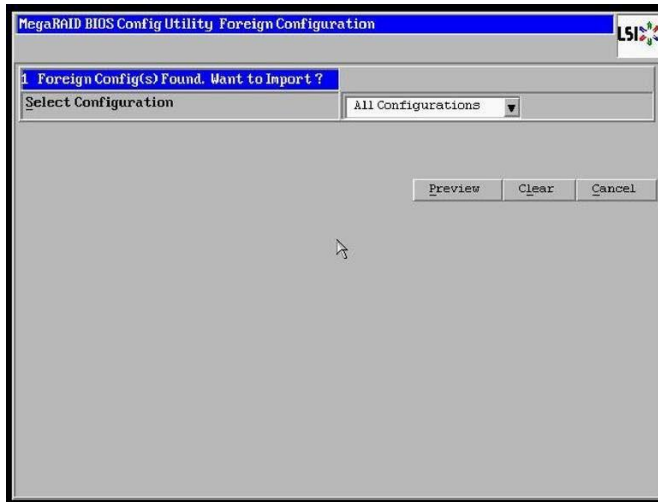
3. Insert a single new content drive into the next available open bay of the server. Make certain that each drive sled latch clicks into place, ensuring proper drive seating.

Wait approximately 30 seconds and then click the **Scan Devices** link from Navigation to access to the Foreign Configuration page.

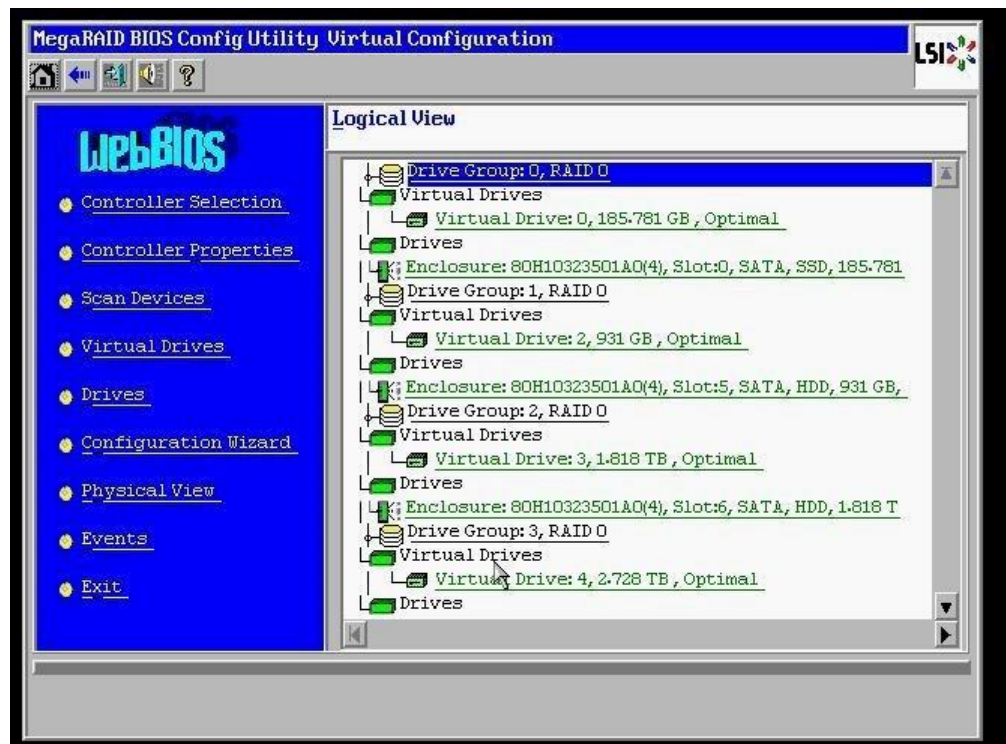
Note: If you have more than one new drive you will repeat steps 3 through 15 for each drive.



4. When prompted, click on the **Clear** button to clear the foreign configuration of the drive. Then click **Yes** to confirm and return to the Logical View.



5. Click **Configuration Wizard** link from Navigation to access the Configuration Wizard



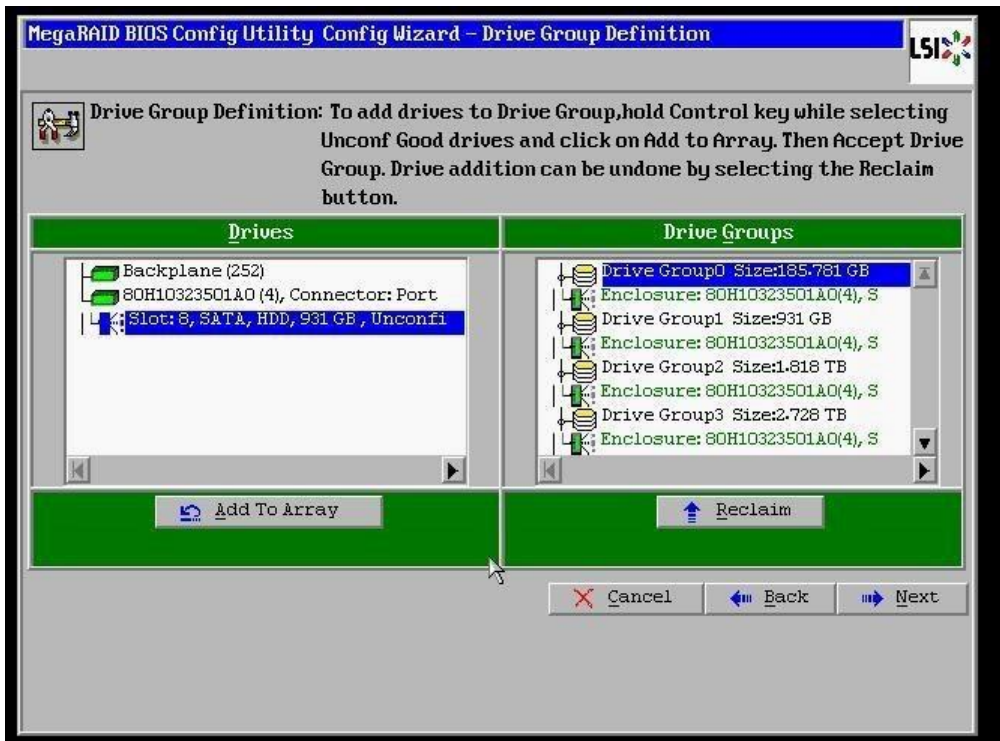
6. Select **Add Configuration** and click **Next** to continue



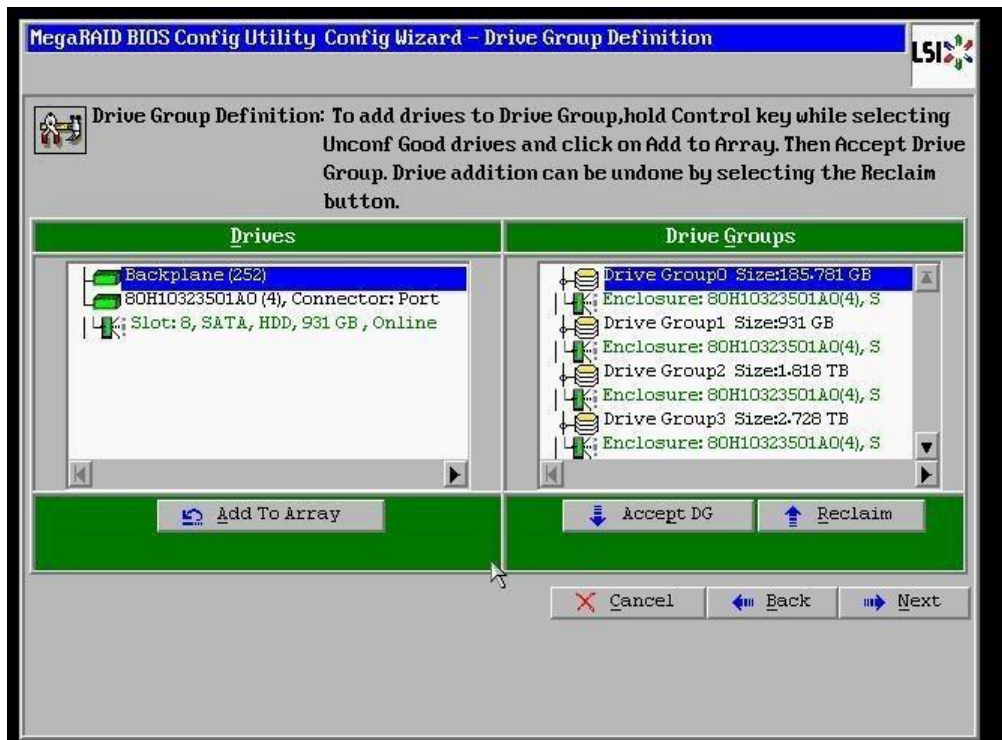
7. Select **Manual Configuration** under the Configuration Method and click **Next** to continue



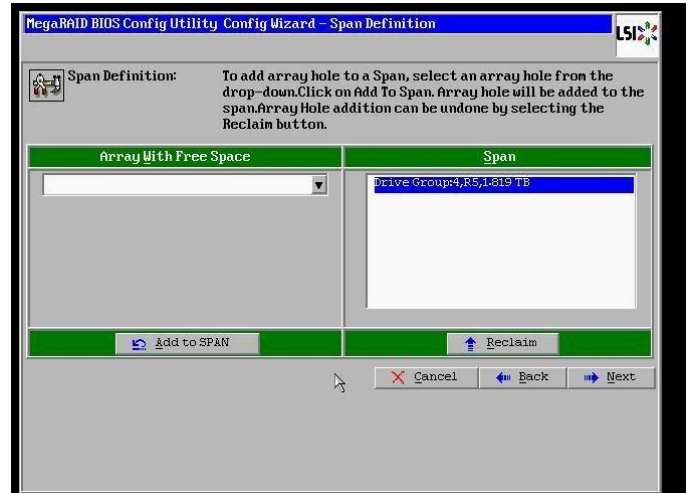
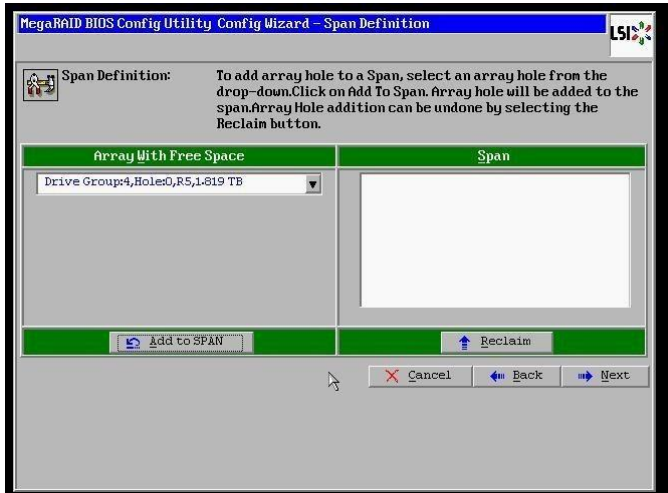
8. Select the newly installed hard drive from the **Drives** list and click the **Add To Array** button



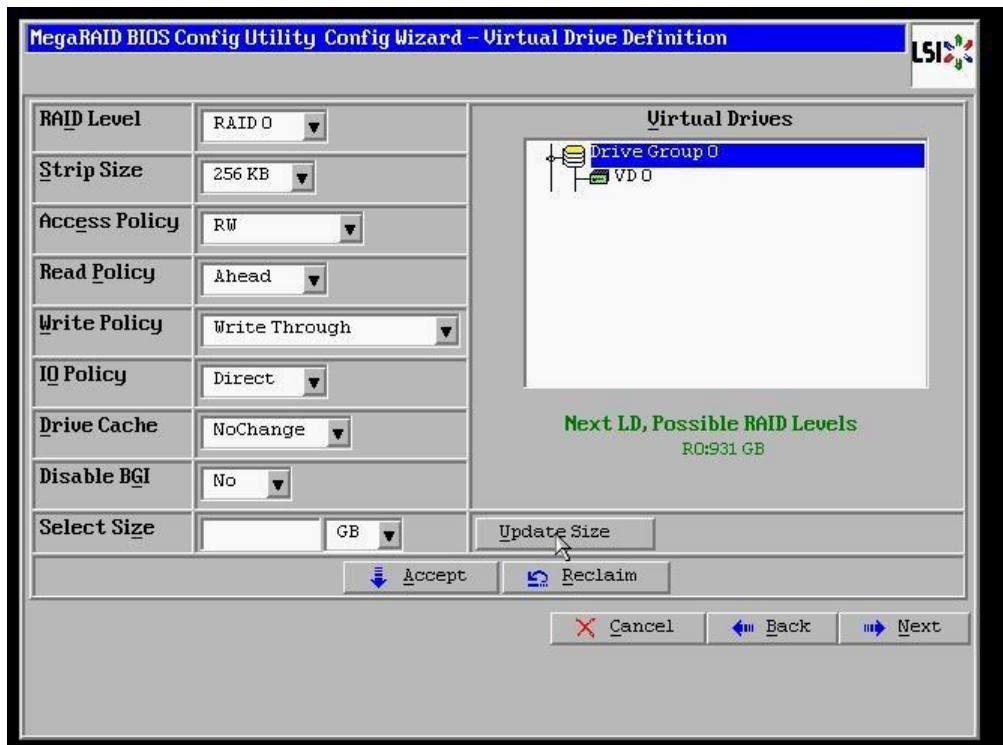
9. Click on the **Accept DG** button, to accept the Drive Group from under the **Drive Groups** and click **Next** to continue



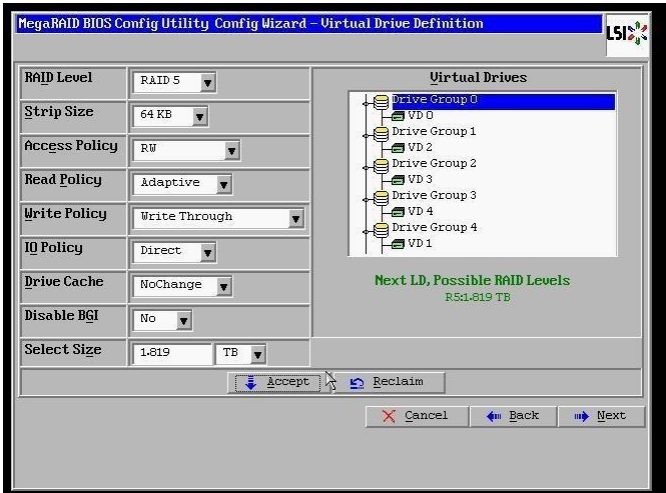
10. Select the hard drive from the **Array With Free Space** drop down and click the **Add to SPAN** button. The hard drive should move to the **Span** window. Click **Next** to continue.



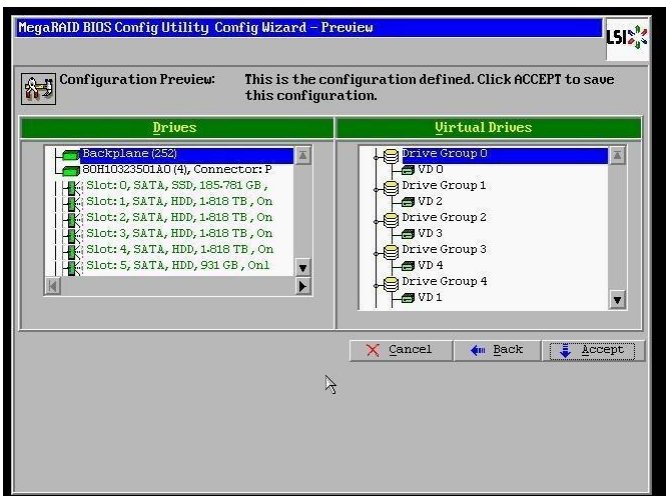
11. Click on the **Update Size** button



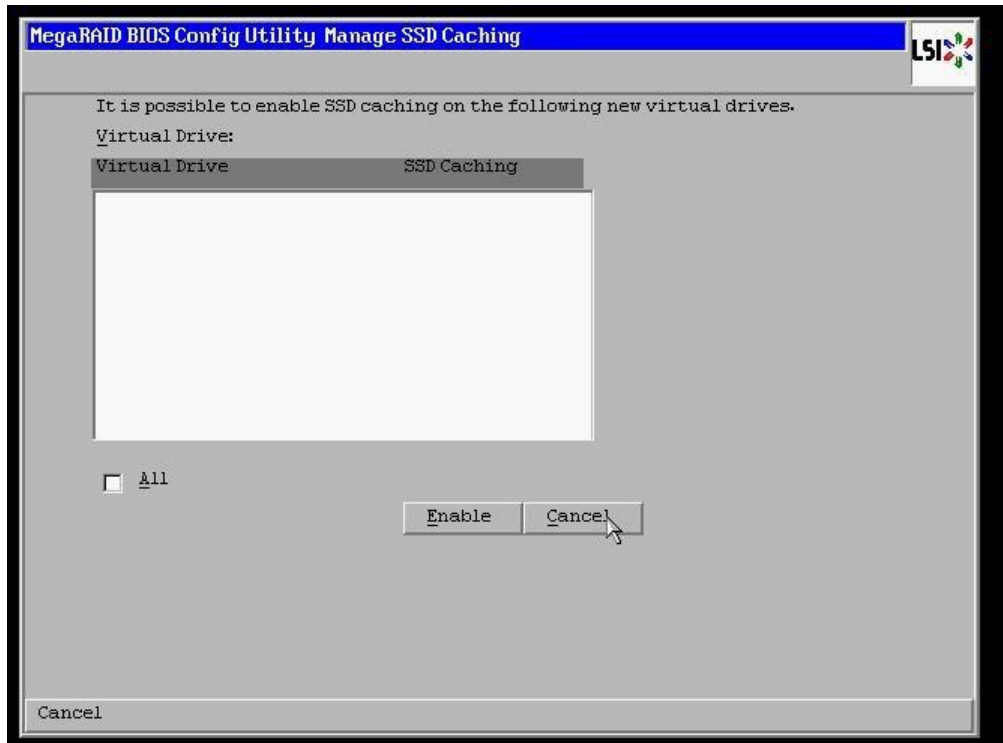
12. Click on the **Accept** button to save the drive configuration. Click on the **Yes** button when prompted regarding use of **Write Through mode**. Click on **Next** to continue.



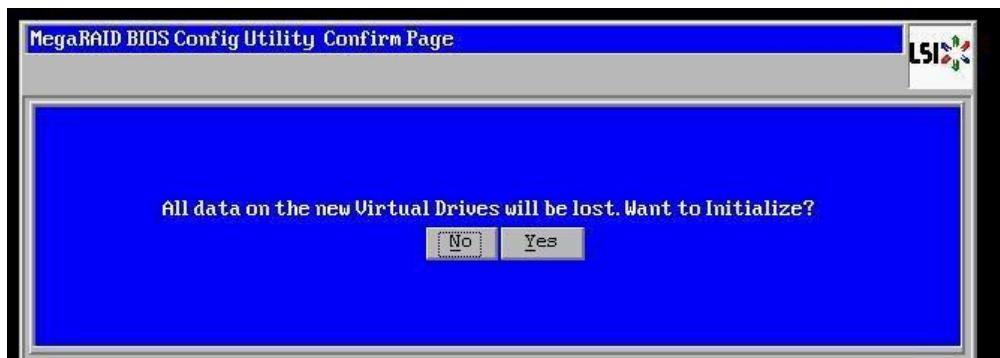
13. Click **Accept** to save the virtual drive configuration and then click **Yes** to confirm



14. Click **Cancel** when asked to enable SSD caching

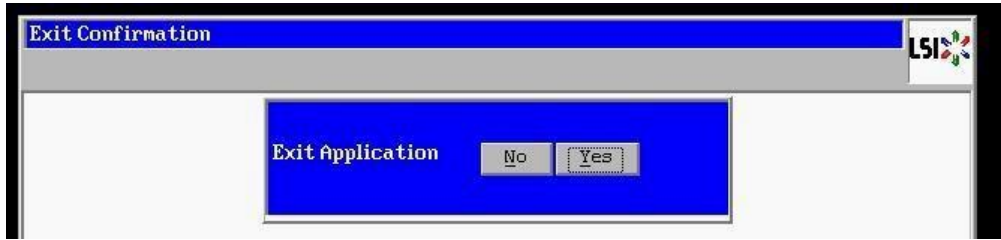


15. Click **No** when asked to initialize the virtual drive

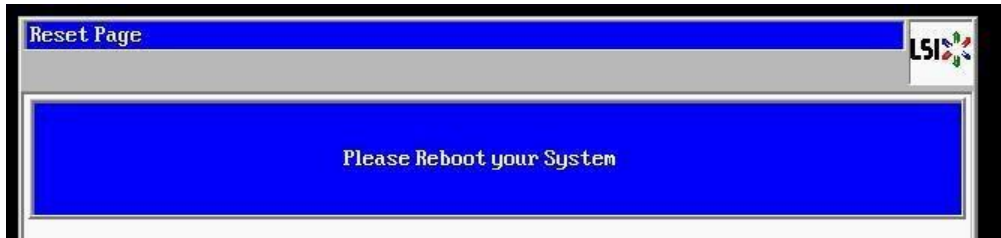


Note: If installing multiple drives return to step 3 now and repeat for each new drive. You must completely reboot the server between drive set installations if adding more than one drive set to a single server.

16. When all new content drives have been configured, click the **Exit** link in the left-hand navigation and then **Yes** to confirm



17. Press <CTRL>+<ALT>+<DELETE> to restart the server



18. Return to step 4 on **page 3**